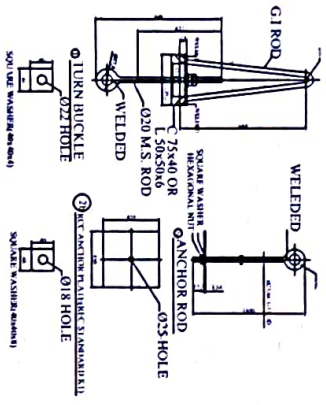
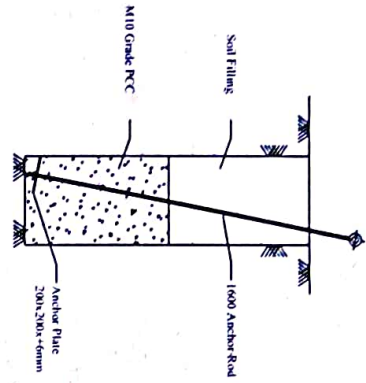
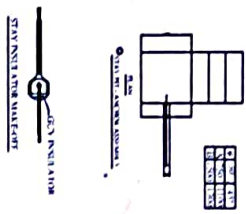
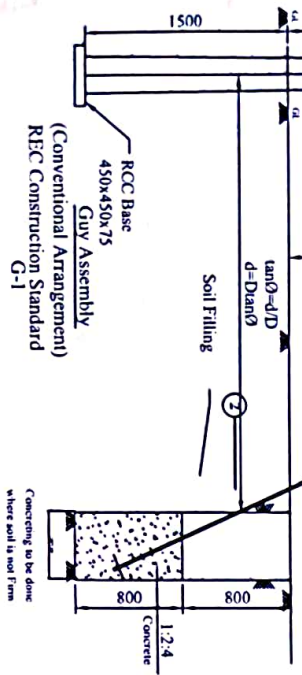


# STAY SET ARRANGEMENT FOR 11KV/ LT LINE

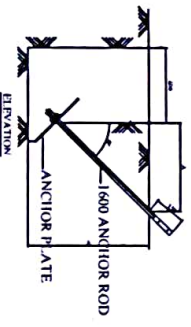
All Dimensions are in mm unless otherwise mentioned  
 Manufacturing Tolerance as Follows  
 Up to 50mm : ± 5%  
 51 to 100mm : ± 4%  
 101 to 300mm : ± 3%  
 Above 300mm : ± 2%



## Stay Set Arrangement



## Stay Set Arrangement




ITEM NO.	DESCRIPTION	SECTION	MATERIAL	LENGTH MM	QTY
1	TURN BUCKLE ASSEMBLY		G.I	180	1 NO
2	EYE BOLT		G.I	50	1 NO
3	REPORTING ANGLE		G.I	180	1 NO
4	EYE HOOK		G.I	1000	1 NO
5	WASHER		G.I	40x40	1 NO
6	NUT		G.I	2 NOS	2 NOS
7	ANCHOR ROD & ANCHOR PLATE		G.I	1900	1 NO
8	ANCHOR ROD		G.I	1900	1 NO
9	ANCHOR PLATE (REC STANDARD K-1)		RCC	450x450	1 NO
10	SQUARE WASHER		G.I	40x40	1 NO
11	NUT		G.I	1 NO	1 NO
12	GIY INSULATOR		G.I	1 NO	1 NO
13	STAY WIRE		G.I	7315mm	1 NO
14	THIMBLE		G.I	2 NOS	2 NOS

Concreting 0.2cm

### NOTES:-

- 1) ALL DIMENSIONS ARE IN MM UNLESS OTHERWISE MENTIONED.
- 2) ALL M.S. ITEM SHALL BE HOT DIP GALVANISED AS PER IS 2629&4759
- 3) MANUFACTURING TOLERANCE  
 UP TO 50mm - ± 5%  
 51 TO 100mm - ± 4%  
 101 TO 300mm - ± 3%  
 ABOVE 300mm - ± 2%
- 4) M.S MATERIAL SHALL CONFIRM TO IS: 2062.
- 5) GUY INSULATORS TO BE UTILISED AS PER SPECIFICATION FOR HT & LT LINES RESPECTIVELY.
- 6) FOR FIRM SOILS, ONLY SOIL FILLING WITH COMPACTION TO BE DONE
- 7) IN CASE OF ANY DISCREPANCY, PLEASE REPORT TO CE, P&P WING KPDC.
- 8) THESE ARE TENDER DRAWINGS SUBJECT TO MODIFICATION BY THE OWNER AS PER FIELD REQUIREMENTS. CONTRACTOR TO SUBMIT HIS DRAWINGS AFTER THE AWARD OF CONTRACT FOR APPROVAL OF THE OWNER.

  
**Kashmir Power Distribution Corporation Ltd**

## Stay Set arrangement for 11KV/ LT line

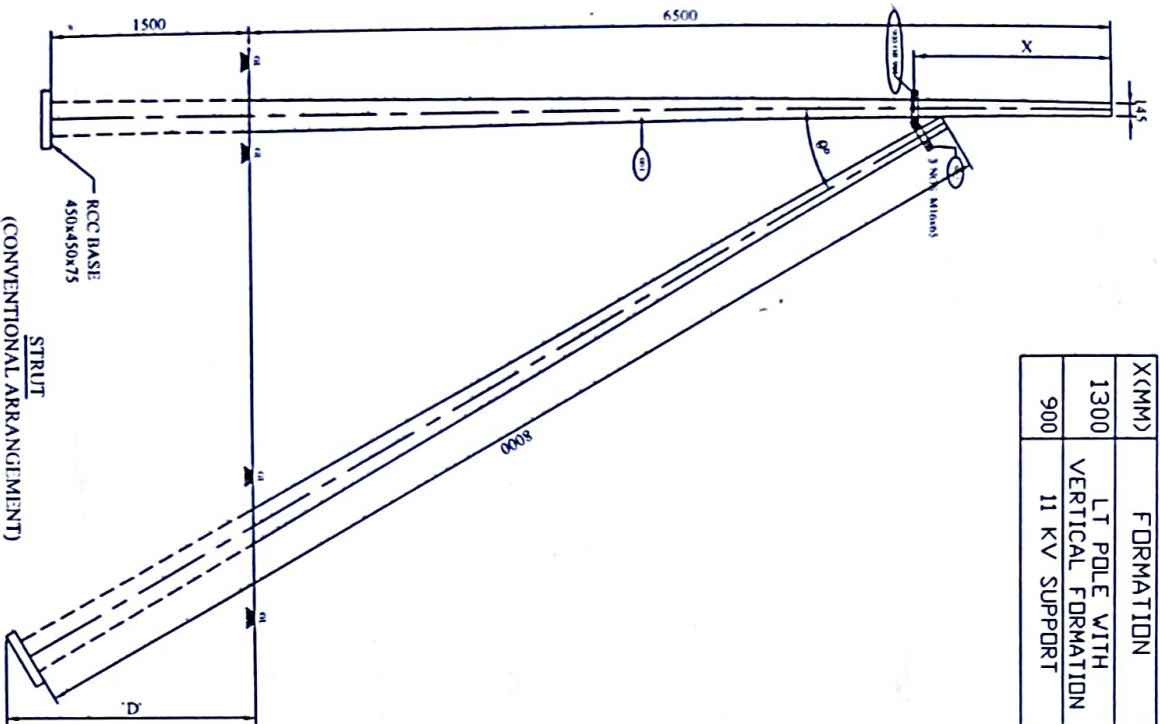
Checked by: *[Signature]*  
 A.E. (Planning Div 1st)

Checked by: *[Signature]*  
 En. Engineer (Planning Div 1st)

Approved By: *[Signature]*  
 Manager (Planning Div 1st)

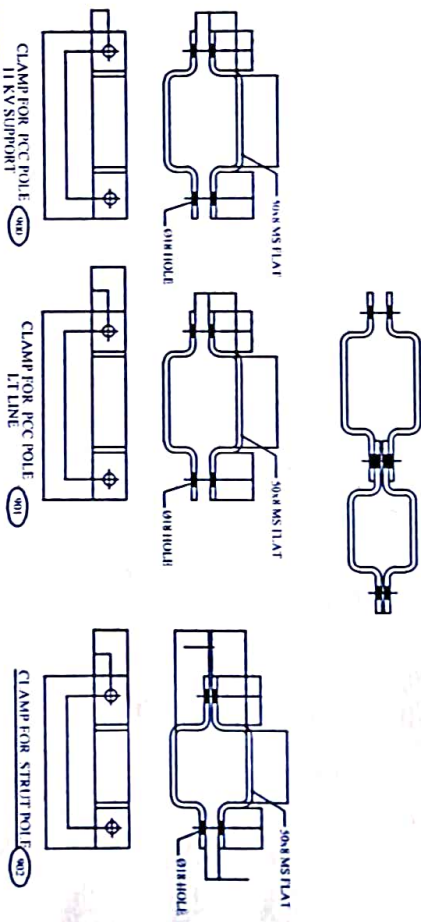
DRG. NO. CE/P&P/DG/2023/11KV/LT/SSA/001





X(MM)	FORMATION
1300	LT POLE WITH VERTICAL FORMATION
900	11 KV SUPPORT

BILL OF MATERIAL							
ITEM NO.	DESCRIPTION	SIZE	MATERIAL	LENGTH MM	KG/MTR	QTY	TOTAL WT. KG.
901	300x300x10 R.C.C. POLE	300x300	MS	1300	2.500	2.375	
902	CLAMP FOR R.C.C. POLE (11KV SUPPORT)	300x300	MS	1300	2.400	2.400	
903	CLAMP FOR R.C.C. POLE (11KV SUPPORT)	300x300	MS	1300	2.400	2.400	
904	CLAMP FOR STRUT POLE	300x300	MS	1300	2.400	2.400	
905	300x300x10 R.C.C. POLE	300x300	MS	1300	2.500	2.375	
906	CLAMP FOR STRUT POLE	300x300	MS	1300	2.400	2.400	
907	SPRING WASHER	M16	MS	1300	0.027	0.027	
908	FRAM WASHER	M16	MS	1300	0.045	0.045	
<b>TOTAL</b>						<b>13.000</b>	<b>7.653</b>



- GENERAL NOTES:**
- 1) ALL DIMENSIONS ARE IN MILLIMETERS UNLESS OTHERWISE MENTIONED
  - 2) MANUFACTURING TOLERANCE:  
 UPTO 50mm - + 0.5%  
 51 TO 100mm - + 0.4%  
 101 TO 300mm - + 0.3%  
 ABOVE 300mm - + 0.2%
  - 3) ALL M.S. PARTS SHALL CONFORM TO IS 2062
  - 4) ALL M.S. FABRICATED ITEMS SHALL BE HOT DIP GALVANISED AS PER IS 2629 & 4759
  - 5) ALL THE ITEMS SHALL BE MARKED WITH ENCL. ION CODE.
  - 6) WEIGHT MENTIONED IS FOR PACKING & FORWARDING PURPOSE ONLY.
  - 7) ALL CLAMPS AND ANGLES SHALL CONFORM TO IS 816 PART-1. ALL CHANNELS SHALL BE IS C CHANNELS
  - 8) IN CASE OF ANY DISCREPANCY, PLEASE REPORT TO CL. P&P WHO WROTE.
  - 9) THESE ARE TENDER DRAWINGS SUBJECT TO MODIFICATION BY THE ENGINEER IN CHARGE. THE CONTRACTOR SHALL BE RESPONSIBLE TO SUPPORT THE DIMENSIONS AFTER THE AWARD OF CONTRACT FOR APPROVAL OF THE OWNER.

**Kashmir Power Distribution Corporation Ltd**

STRUT ARRANGEMENT

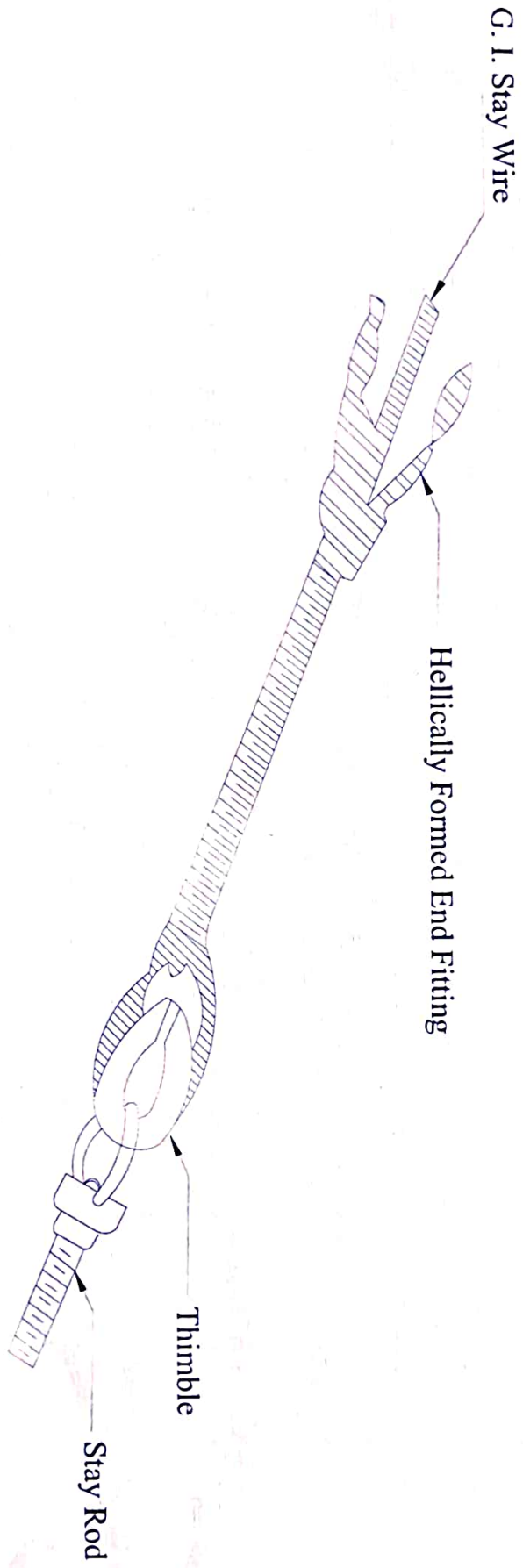
Checked by: E. Ruheela Tabassum / Nuclear Guj  
 A/E Planning Div 1st

Checked by: E. Mansoor Ahmad Dar  
 Ex. Engineer / Planning Div 1st

Approved by: E. Mazaffar Malik  
 Chief Engineer / P&W, KPDC


DRG. NO. CBR/P/DRG/2023/11/V. TISSA001

Sheet 3 of 5



NOTE: FOR DETAILS OF HELLICALLY FORMED GUY GRIPS REFER REC SPECIFICATION NO. 25/1983

Type your text

  
**Kashmir Power Distribution Corporation Ltd.**  
 Guy - End Assembly  
 (Using Hellically Formed Fitting)

Checked by Er. Ruhela Tabsum / Nusrat Gul A/E Planning Div.1st. 	Checked By Er. Manzoor Ahmad Dar Ex. Engineer Planning Div.1st. 
---	---

Approved By Er. Muzaffar Mukhtar  
 Shift Chief Engineer P&P wing  
 KPDC.  


DRG. NO. CE/P&P/Dr/2023/11KVL/T/SSA/001  
 Sheet 4 of 5

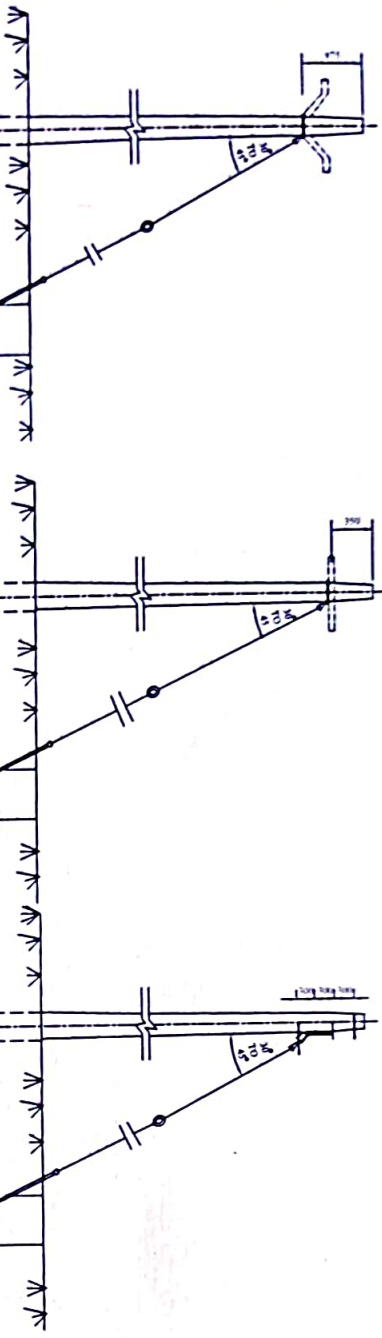
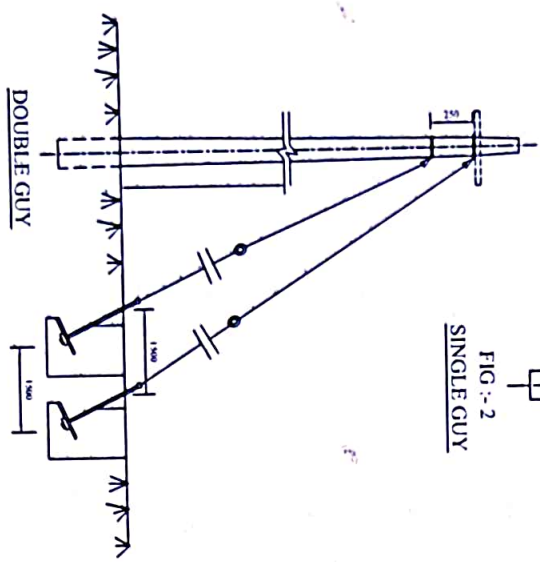


FIG:-1

FIG:-2  
SINGLE GUY

FIG:-3



DOUBLE GUY

NOTES :-  
1. SINGLE GUY ARRANGEMENT AS PER FIGURE 1, 2 & 3 CAN BE USED WHEN TOTAL TENSION TO BE TAKEN ON THE GUY DOES NOT EXCEED THE FOLLOWING LIMITS

2. IN THE DURABLE GUY ARRANGEMENT THE FOUNDATION OF THE GUYS SHOULD BE SO PLACED THAT ONE DOES NOT REDUCE THE STRENGTH OF THE OTHER. IN OTHER WORDS, THE SOIL WHICH RESISTS THE UP - LIFT SHOULD NOT BE DISTURBED WHILE DIGGING THE FOUNDATION FOR THE OTHER STAY.

3. FOR DETAILS OF COMPONENTS OF GUY ASSEMBLY, REFER. G - 1.

4) IN CASE OF ANY DISCREPANCY, PLEASE REPORT TO CE/P&P WING KPDC.  
5) THESE ARE TENDER DRAWING SUBJECT TO MODIFICATION BY THE OWNER AS PER FIELD REQUIREMENT. CONTRACTOR TO SUBMIT HIS DRAWINGS AFTER THE AWARD OF CONTRACT FOR OF APPROVAL OF THE OWNER



Kashmir Power Distribution Corporation Ltd.

Guying Arrangement Single & Double Guy

Checked By Er. Rubieela Tabbisum / Nusrat Gul  
A.E.E Planning Div.1st.  
*Rubieela*

Checked By Er. Manzoor Ahmad Dar  
Ex. Engineer Planning Div.1st.  
*Manzoor*

Approved By Er. Muzaffar Mukhtar  
Shah Chief Engineer P&P wing  
KPDC.  
*Muzaffar*

DRG. NO. CE/P&P/D/g/2023/11K/VL/T/ISSA/001  
Sheet 5 of 5